

## DEPARTMENT W--ART



### DEPARTMENT W--ART

Superintendent: Pam Catterson, 447-4122

Pre Entry Forms Due: Friday July 31, 2009

Exhibit Arrival: 9:00 a.m. to 1:00 p.m. & 4 PM to 7 PM, Monday,  
August 3, 2009

Judging: Tuesday, August 4, 2009

**Exhibit Pick-up Sunday, August 9, 11 AM to 2 PM**

**BEST OF SHOW, JUDGES CHOICE AND SUPERINTENDENTS CHOICE  
RIBBONS WILL BE AWARDED**

### RULES AND REGULATIONS:

1. Each exhibit submitted must be artist's own work.
2. Work must have been done in the past two years and not previously exhibited at the Crook County Fair.
3. All work must be ready for hanging or will not be accepted.
4. No wet oils accepted.
5. An exhibitor may enter more than one per class, but will only be awarded one premium per class.
6. PROFESSIONAL--Sales of work exceed cost of materials incurred for year. Sells major portion of works. One who does extensive instruction.
7. SEMI PROFESSIONAL--Sales do not exceed cost of materials incurred for year.
8. NOVICE/AMATEUR--One who does art work mainly as a hobby and may sell an occasional painting or drawing.
9. If it is ascertained that any work is entered in the wrong class or division the superintendent will place the work in the proper category.
10. Any single work may be entered in one division only, with the exception of Fair Theme Contest.
11. All entries are to be framed, matted, or mounted on stiff backing.
12. Art for sale will have information posted at the department table. Please bring your name, address, phone number, and price of your piece for sale on a 5 x 7 card.

### PREMIUM

1st--\$3.00

2nd-- \$2.00

3rd--\$1.00

### AGE CATEGORY:

YOUTH--17 & UNDER--see divisions 839, 840, 843, 846, 849 & 852

YOUTH – From 1 yr to 6 see divisions 855, 856, 857 & 858

ADULT--18 - 54

SENIOR--55 & OVER

DEPARTMENT W--ART

DIVISION 839--FAIR THEME CONTEST--  
ALL MEDIA ACCEPTED

This art entry maybe also entered in any other one division.

YOUTH Up to age 9	YOUTH 10-13	YOUTH 14-17	ADULT	SENIOR	CLASS
3360-A	3360-B	3306-C	6360	9360	2009 Fair Theme: <i>"Open Spaces, Happy Faces"</i>

DIVISION 840--OIL OR ACRYLIC, NOVICE/AMATEUR

YOUTH Up to age 9	YOUTH 10 to 13	YOUTH 14-17	ADULT	SENIOR	CLASS
3363-A	3363-B	3363-C	6363	9363	Landscape
3364-A	3364-B	3364-C	6364	9364	Portrait
3365-A	3365-B	3365-C	6365	9365	Animal
3366-A	3366-B	3366-C	6366	9366	Seascape
3367-A	3367-B	3367-C	6367	9367	Still life
3368-A	3368-B	3368-C	6368	9368	Floral
3369-A	3369-B	3369-C	6369	9369	Abstract

DIVISION 841--OIL OR ACRYLIC, SEMI-PROFESSIONAL

ADULT	SENIOR	CLASS
6373	9373	Landscape
6374	9374	Portrait
6375	9375	Animal
6376	9376	Seascape
6377	9377	Still life
6378	9378	Floral
6379	9379	Abstract

DIVISION 842--OIL OR ACRYLIC, PROFESSIONAL

ADULT	SENIOR	CLASS
6395	9395	Landscape
6396	9396	Portrait
6397	9397	Animal
6398	9398	Seascape
6399	9399	Still life
6400	9400	Floral
6401	9401	Abstract

DEPARTMENT W--ART

DIVISION 843--MIXED MEDIA, NOVICE/AMATEUR

YOUTH Up to age 9	YOUTH 10 to 13	YOUTH 14-17	ADULT	SENIOR	CLASS
3406-A	3406-B	3406-C	6406	9406	Landscape
3407-A	3407-B	3407-C	6407	9407	Portrait
3408-A	3408-B	3408-C	6408	9408	Animal
3409-A	3409-B	3409-C	6409	9409	Seascape
3410-A	3410-B	3410-C	6410	9410	Still life
3411-A	3411-B	3411-C	6411	9411	Floral
3412-A	3412-B	3412-C	6412	9412	Abstract

DIVISION 844--MIXED MEDIA,  
SEMI-PROFESSIONAL

ADULT	SENIOR	CLASS
6417	9417	Landscape
6418	9418	Portrait
6419	9419	Animal
6420	9420	Seascape
6421	9421	Still life
6422	9422	Floral
6423	9423	Abstract

DIVISION 845--MIXED MEDIA, PROFESSIONAL

ADULT	SENIOR	CLASS
6439	9439	Landscape
6440	9440	Portrait
6441	9441	Animal
6442	9442	Seascape
6443	9443	Still-life
6444	9444	Floral
6445	9445	Abstract

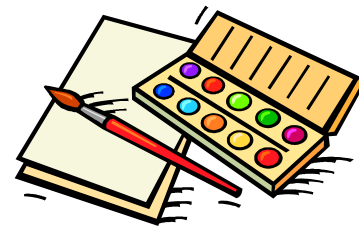
DEPARTMENT W--ART

DIVISION 846--WATERCOLOR, NOVICE/AMATEUR

YOUTH Up to age 9	YOUTH 10 to 13	YOUTH 14-17	ADULT	SENIOR	CLASS
3450-A	3450-B	3450-C	6450	9450	Landscape
3451-A	3451-B	3451-C	6451	9451	Portrait
3452-A	3452-B	3452-C	6452	9452	Animal
3453-A	3453-B	3453-C	6453	9453	Seascape
3454-A	3454-B	3454-C	6454	9454	Still-life
3455-A	3455-B	3455-C	6455	9455	Floral
3456-A	3456-B	3456-C	6456	9456	Abstract

DIVISION 847--WATERCOLOR, SEMI-PROFESSIONAL

ADULT	SENIOR	CLASS
6461	9461	Landscape
6462	9462	Portrait
6463	9463	Animal
6464	9464	Seascape
6465	9465	Still-life
6466	9466	Floral
6467	9467	Abstract



DIVISION 848--WATERCOLOR, PROFESSIONAL

ADULT	SENIOR	CLASS
6486	9486	Landscape
6487	9487	Portrait
6488	9488	Animal
6489	9489	Seascape
6490	9490	Still-life
6491	9491	Floral
6492	9492	Abstract

DEPARTMENT W--ART

DIVISION 849--PASTELS, NOVICE/AMATEUR

YOUTH Up to age 9	YOUTH 10 to 13	YOUTH 14-17	ADULT	SENIOR	CLASS
3500-A	3500-B	3500-C	6500	9500	Landscape
3501-A	3501-B	3501-C	6501	9501	Portrait
3502-A	3502-B	3502-C	6502	9502	Animal
3503-A	3503-B	3503-C	6503	9503	Seascape
3504-A	3504-B	3504-C	6504	9504	Still-life
3505-A	3505-B	3505-C	6505	9505	Floral
3506-A	3506-B	3506-C	6506	9506	Abstract

DIVISION 850--PASTELS, SEMI-PROFESSIONAL

ADULT	SENIOR	CLASS
6510	9510	Landscape
6511	9511	Portrait
6512	9512	Animal
6513	9513	Seascape
6514	9514	Still-life
6515	9515	Floral
6516	9516	Abstract

DIVISION 851--PASTELS, PROFESSIONAL

ADULT	SENIOR	CLASS
6520	9520	Landscape
6521	9521	Portrait
6522	9522	Animal
6523	9523	Seascape
6524	9524	Still-life
6525	9525	Floral
6526	9526	Abstract

DIVISION 852--DRAWING, NOVICE/AMATEUR

YOUT Up to age 9	YOUTH 10 to 13	YOUTH 14-17	ADULT	SENIOR	CLASS
3530-A	3530-B	3530-C	6530	9530	Charcoal
3531-A	3531-B	3531-C	6531	9531	Pen & ink
3532-A	3532-B	3532-C	6532	9532	Pencil
3533-A	3533-B	3533-C	6533	9533	Other

DEPARTMENT W--ART

DIVISION 853--DRAWING, SEMI-PROFESSIONAL

ADULT	SENIOR	CLASS
6540	9540	Charcoal
6541	9541	Pen & ink
6542	9542	Pencil
6543	9543	Other

DIVISION 854--DRAWING, PROFESSIONAL

ADULT	SENIOR	CLASS
6545	9545	Charcoal
6546	9546	Pen & ink
6547	9547	Pencil
6548	9548	Other

DIVISION 855--PAINTING, YOUNG ARTISTS

YOUTH 1 to 3	YOUTH 4 to 6	CLASS
3550-A	3550-B	Young artists

DIVISION 856--FREE HAND, YOUNG ARTISTS

YOUTH 1 to 3	YOUTH 4 to 6	CLASS
3555-A	3555-B	Free Hand

DIVISION 857--COLLAGE, YOUNG ARTISTS

YOUTH 1 to 3	YOUTH 4 to 6	CLASS
3560-A	3560-B	Collage

DIVISION 858--MIXED MEDIA, YOUNG ARTISTS

YOUTH 1 to 3	YOUTH 4 to 6	CLASS
3565-A	3565-B	Mixed Media

DIVISION 844--MIXED MEDIA,  
SEMI-PROFESSIONAL

ADULT	SENIOR	CLASS
6417	9417	Landscape
6418	9418	Portrait
6419	9419	Animal
6420	9420	Seascape
6421	9421	Still life
6422	9422	Floral
6423	9423	Abstract